

Q & A



If I use the hourly childcare service, will the amount of parental benefits (cash) or childcare allowances be reduced and paid according to the amount used?

No. Parental benefits (cash) or childcare allowances are paid in full to users of the hourly childcare service. The hourly childcare service users can pay for childcare fees using the National Happiness Card as much as the amount of used for the parental benefits (cash) or childcare allowances received in full.



How do I find the hourly childcare providers near my home?

You can check through 'Maternity and Childcare Comprehensive Portal, i-sarang → Daycare Centers → Hourly childcare → Apply for the hourly childcare service → Find an hourly childcare institution.'

※ Regardless of where you live, you can use it after making a reservation at the institution of your choice.



I have used all 60 hours, which is the monthly allocated hours. Can I not use it additionally?

Yes, you can. However, it will be charged at 100% self-payment (5,000 won per hour) without government support.



Are meals and snacks available?

If you wish to receive meals or snacks when using an integrated class, meals or snacks will be provided after applying in advance to the relevant daycare center. (charged for parents: 2,200 won)

※ In the case of independent classes, in principle, meals and snacks are not provided. However, meals and snacks can be provided at the parents' expense in consultation with an institution that can provide them.



Reservation | Maternity and Childcare Comprehensive Portal, i-sarang(PC/Mobile)
www.childcare.go.kr



Telephone number | 1661-9361



i-sarang Help Desk | 1566-3232



보건복지상담센터
힘이되는 129



보건복지부



한국보육진흥원

SSIS 한국사회보장정보원

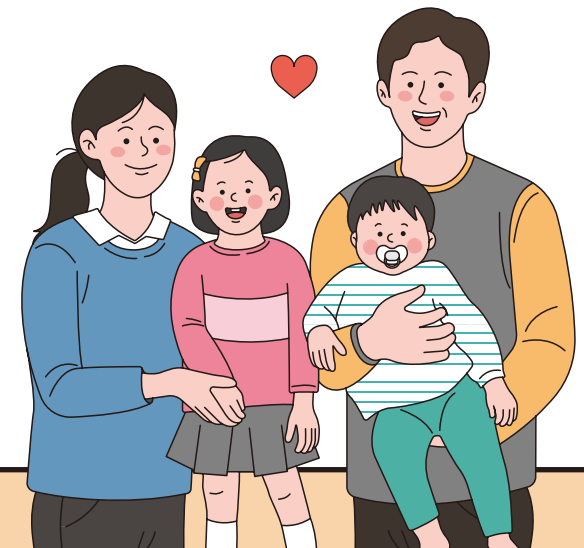


Hourly Childcare Services

Relaxing time for parents!

Growing time for children!

The hourly childcare service
is making it.



What is the hourly childcare service?

A childcare service where designated providers (daycare center, comprehensive childcare support center, etc.) are utilized at home on an hourly (or time slot) basis, and childcare fees are paid according to the hours of usage.



Service recipients

[Independent class] for infants aged 6 months to under 36 months

[Integrated class] for infants aged 6 months to 2 years and a half*

*Based on the birth date of 2 and a half years: 2021.1.1 - 2021.12.31.



Hour

[Independent class] Weekdays (Mon-Fri) 9:00 ~ 18:00

※ Reservation by hour

[Integrated class] Weekdays (Mon-Fri) 9:00 ~ 16:00

(AM) 9:00~12:00 (PM) 13:00~16:00

(All day) 9:00~16:00 ※ Reservation by time slot



Location

Designated childcare providers such as kindergartens, comprehensive childcare support centers, etc



Childcare fee

Category		Details
Childcare fee	Government subsidies	3,000 won per hour
	Out-of-pocket expenses	2,000 won per hour
Supported hours		60 hours per month

※ The hourly childcare fee is supported only for recipients of parental benefits (cash) or childcare allowances.

※ Children receiving childcare fees, preschool fees, etc., as well as foreign children, are eligible for full self-payment (5,000 won per hour) for use

How to use and process

Sign up and child registration

- After joining as a member (registering with a digital certificate) to the Maternity and Childcare Comprehensive Portal, i-sarang [PC/Mobile], register the child for the hourly childcare service
 - ※ If a child is registered through a managing/ providing institution, reservations can only be made by phone (applies to independent class).
 - ※ Foreign children need to be registered separately to the city, county, or district office and the managing institution (Continued use possible after initial registration)

Reservation

• Period

[Independent class]

Available from 14 days before the day of using service (9:00) until 1 day before the day of using service (24:00)

[Integrated class]

Available from 14 days before the day of using service (00:00) until 2 days before the day of using service (24:00)

• PC/Mobile

Maternity and Childcare Comprehensive Portal, i-sarang

• The hourly childcare service representative number

1661-9361

※ Please note the following precautions for changing reservations Penalties will be imposed depending on the timing of reservation changes and cancellations (No penalties will be imposed until the day before use).

<Penalty criteria for cancellations and changes to reservation >

On the day of use			
Before the reserved time	Within the reserved time	Not used	Exceeding use
1 point	2 points	3 points	4 points

※ The penalty point system is operated by combining independent and integrated classes.

※ If the penalty points exceed 7, the cancellation of reservation for the current month and reservation restrictions will apply. Voucher support will be restricted (penalty points do not carry over to the next month).

Use

• Documents to be submitted

- Hourly Childcare Service Application Form and Operation Regulations Agreement
- Family relationship certificate and ID card (returned after confirmation)

- **Materials to prepare** : Diapers, spare clothes, wet wipes, etc.

Payment

- Payment is made with each use (in-person payment/website or app payment)
 - The cost of hourly childcare is automatically calculated based on the reserved time, and government subsidies are provided only for the actual hours used.
 - Pay the National Happiness Card (existing i-sarang card and Child Happiness Card can be used)
 - If you pay with a payment method other than the National Happiness Card, you must pay the full amount.

What are the independent class and integrated class?



Independent class			Integrated class	
A dedicated teacher is hired for the hourly childcare, and childcare is provided in a separate space (an independent childcare room) on an hourly basis, with childcare fees paid according to the hours used			Some of the basic childcare class capacity is integrated and operated for hourly childcare, allowing the use of the same schedule and childcare program as the basic childcare class on an hourly basis, with childcare fees paid according to the hours used.	
Class A 	Class B 	Hourly 	Class A 	Class B